

PAL

ARCHITECTURAL

MICROLINEA™
SERIES 3 WET LOCATION

The Microlinea Series 3 Wet Location family of fixtures are ideal for canopies, walkways, entryways and parking garages, as well as such indoor settings as locker rooms, spas, natatoriums and greenhouses. With moisture resistance, outdoor functionality and a slim profile, the Microlinea Series 3 WL delivers superior indoor and outdoor performance.

Microlinea Series 3 Wet Location - IP54:

In row and pattern configurations, the ML3WL54 incorporates a moisture shield and continuous gasketing to prevent moisture intrusion.

- Individual fixtures and uninterrupted rows and patterns of light
- Continuous extruded silicone gasket seals against lens to prevent moisture intrusion
- Excellent photometric performance identical to our Microlinea Series 3 indoor fixtures

Offered in straight continuous runs or patterns with corners, the compact Microlinea Series 3 WL - IP54 is a sleek and tasteful way to light wet location spaces. Recessed and ceiling-mount options are available and the all-aluminum construction is designed for easy-access maintenance.



ML3WL66-D
IP66 DIRECT WALL MT



MLR3WL54
IP54 RECESS MT



ML3WL66
IP66 PENDANT (STEM) MT

Microlinea Series 3 Wet Location - IP66:

With durable, thick acrylic lenses, silicone rubber gasketing, and rugged extruded aluminum housings, the fully-sealed ML3WL66 is the stylish choice for challenging environments.

- Rigid stem, surface/ceiling, recessed, and wall mount options are available
- IP66 rated fixture. SOLIDS: Dust tight - no ingress of dust. LIQUIDS: Protected against powerful water jets from any angle.
- Excellent performance, with standard and asymmetric distributions available.
- Direct distribution features a full cut-off design that exhibits excellent B.U.C. ratings, and conforms to the principles of the International Dark Skies Association. (IDA)

Microlinea Series 3 WL - IP66 is available in both Direct and Indirect/Direct distributions, affording an extra dimension in exterior illumination.

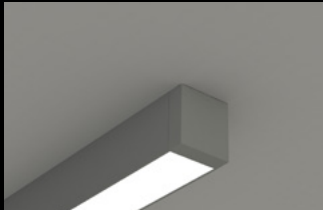
To simplify maintenance, all upper and lower LED modules and drivers can be accessed through the fixture's lower aperture.

SPECIFICATIONS

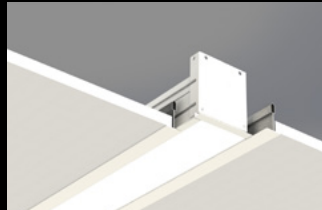
Series/Orientation/ Mounting	Distributions (Flush Lenses)	Standard Outputs (Flush Lenses)	Delivered Lumens/Foot	Efficacies (Lumens/Watt)
MLR3WL54-DIRECT- RECESSED Grid or Drywall Ceilings (IP54 Rated Fixtures)		HO = High output	746 Lms/Ft	104 Lms/W
		MO = Medium Output	463 Lms/Ft	108 Lms/W
		CO = Custom Output	(Contact Factory)	
MLS3WL54-DIRECT- CEILING MOUNT (IP54 Rated Fixture)		HO = High output	746 Lms/Ft	104 Lms/W
		MO = Medium Output	463 Lms/Ft	108 Lms/W
		CO = Custom Output	(Contact Factory)	
ML3WL66-DIRECT- STEM, WALL, CEILING, or RECESS MOUNT (IP66 Rated Fixture)		HO = High Output	671 Lms/Ft	95 Lms/W
		MO = Medium Output	428 Lms/Ft	100 Lms/Ft
		CO = Custom Output	(Contact Factory)	
ML3WL66-DIRECT- STEM, WALL, CEILING, or RECESS MOUNT (Asymmetric Distribution) (IP66 Rated Fixture)		HO = High Output	645 Lms/Ft	87 Lms/W
		MO = Medium Output	486 Lms/Ft	92 Lms/Ft
		CO = Custom Output	(Contact Factory)	
ML3WL66-DIRECT- STEM, WALL, CEILING, or RECESS MOUNT (Asymmetric Distribution) (IP66 Rated Fixture)		HO/HO = High Output Up / High Output Down	1404 Lms/Ft	99 Lms/W
		MO/MO = Medium Output Up / Medium Output Down	(Contact Factory)	
		CO/CO = Custom Output Up & Down	(Contact Factory)	



MICROLINEA SERIES 3 WET LOCATION



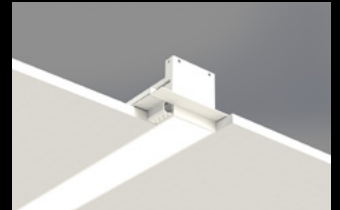
CEILING MOUNT



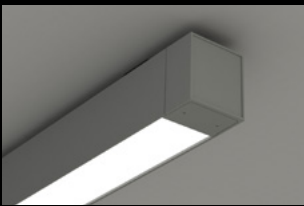
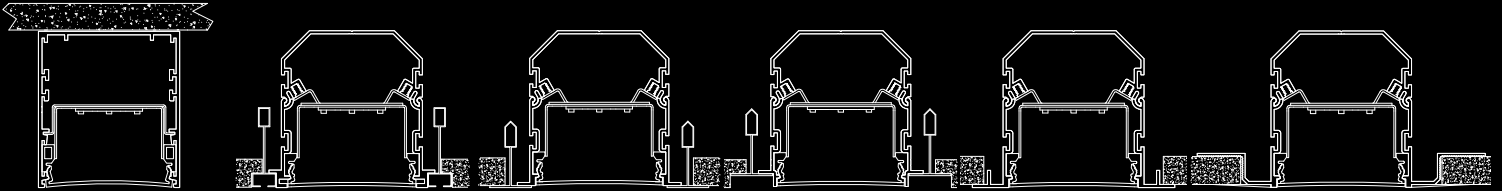
RECESSED GRID
MOUNT



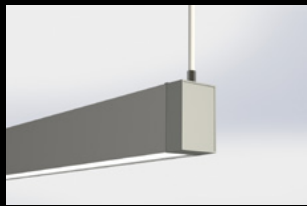
RECESSED DRY WALL
OVERLAP FLANGE



RECESSED DRY WALL
SPACKLE FLANGE



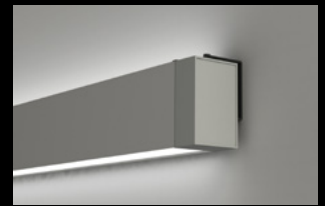
CEILING MOUNT



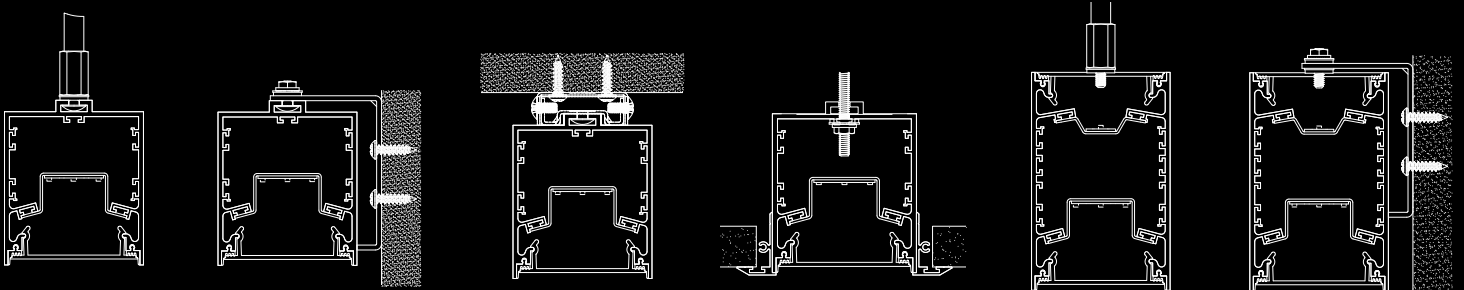
PENDANT (STEM) MOUNT



RECESSED MOUNT



WALL MOUNT



4830 Timber Creek Drive,
Houston, TX 77017
P: 713.946.4343
F: 713.946.4441
www.pal-lighting.com

PAL
ARCHITECTURAL